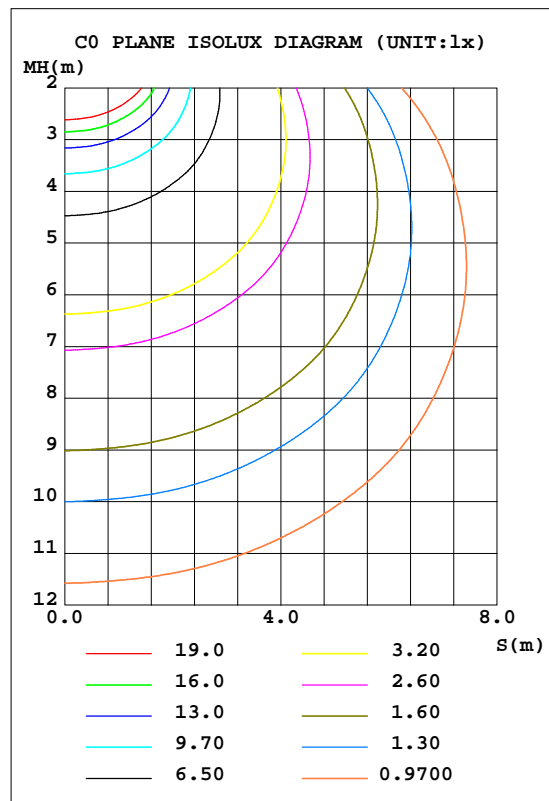
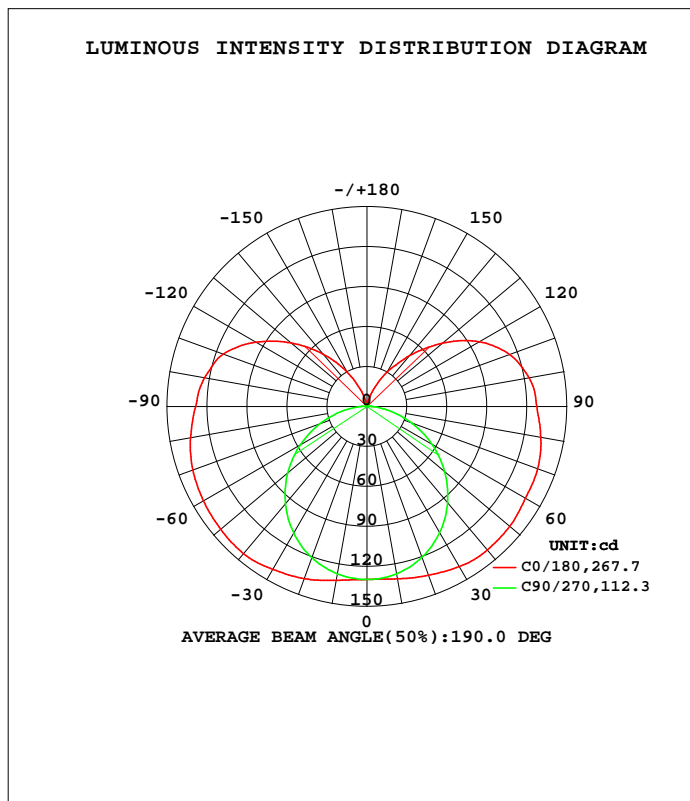


LUMINAIRE PHOTOMETRIC TEST REPORT

Test:U:24.00V I:0.5660A P:13.50W PF:1.000 Freq:0Hz Lamp Flux:931.732x1 lm		
NAME: NNR25	TYPE:	WEIGHT:
SPEC.:NNR25-9NW24CSN050CC0100	DIM.: 1000*25	SERIAL No.:
MFR.: COLORS	SUR.:1000*25	Shielding Angle:

DATA OF LAMP		PHOTOMETRIC DATA				Eff: 69.02 lm/W
MODEL	NNR25	I <sub>max</sub> (cd)	144.1	S/MH(C0/180)		1.68
NOMINAL POWER(W)	14.4	LOR(%)	100.0	S/MH(C90/270)		1.26
RATED VOLTAGE(V)	24	TOTAL FLUX(lm)	931.73	h UP, DN(C0-180)		15.5, 34.5
NOMINAL FLUX(lm)	931.732	CIE CLASS	SEMI-D.	h UP, DN(C180-360)		15.2, 34.9
LAMPS INSIDE	1	h up(%)	30.7	CIBSE SHR NOM		1.50
TEST VOLTAGE(V)	24	h down(%)	69.3	CIBSE SHR MAX		1.55



C Range: 0 - 360DEG  
 C Interval: 45.0DEG  
 Test Speed: HIGH  
 Temperature:25.3DEG  
 Operators:JYH  
 Test Date:2019-12-25

Range: 0 - 180DEG  
 Interval: 1.0DEG  
 Test System:EVERFINE GO-2000A\_V1 SYSTEM V2.0.362  
 Humidity:65.0%  
 Test Distance:10.950m [K=1.0000]  
 Remarks:

ZONAL FLUX DIAGRAM

ZONAL FLUX DIAGRAM:

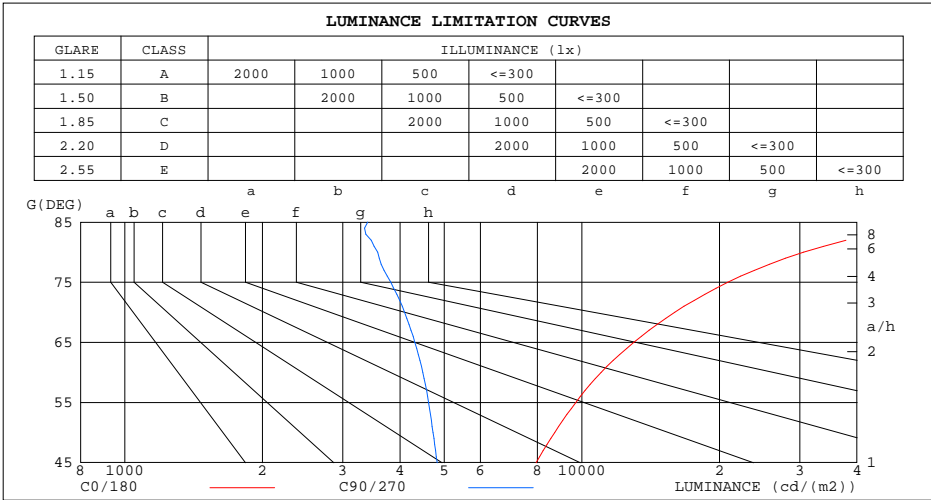
g	C0	C45	C90	C135	C180	C225	C270	C315	g	F zone	F total	%lum,lamp
10	131.3	129.0	127.5	130.8	132.5	130.6	127.6	129.0	0- 10	12.39	12.39	1.33,1.33
20	134.7	127.5	120.5	130.9	137.4	130.9	120.8	127.4	10- 20	36.68	49.07	5.27,5.27
30	138.7	124.2	109.2	128.4	141.2	128.4	109.8	124.1	20- 30	58.89	108.0	11.6,11.6
40	140.6	120.3	94.15	123.9	144.1	123.8	95.24	120.4	30- 40	77.26	185.2	19.9,19.9
50	139.9	113.0	76.09	117.0	143.4	117.1	77.70	113.2	40- 50	90.17	275.4	29.6,29.6
60	137.5	104.0	56.18	107.5	141.7	107.4	57.89	104.5	50- 60	96.07	371.5	39.9,39.9
70	136.3	96.32	35.05	98.83	139.1	98.85	37.09	96.88	60- 70	96.35	467.8	50.2,50.2
80	132.5	89.68	15.54	91.20	134.5	91.39	17.66	90.15	70- 80	92.65	560.4	60.2,60.2
90	127.5	82.95	3.610	83.51	128.6	83.83	4.608	83.25	80- 90	85.55	646.0	69.3,69.3
100	123.6	78.99	0.8160	78.77	123.8	79.24	0.5626	76.23	90-100	79.28	725.3	77.8,77.8
110	114.1	69.06	0.8231	69.27	115.0	70.00	0.7631	61.04	100-110	70.96	796.2	85.5,85.5
120	97.43	51.55	1.064	51.31	96.58	52.00	0.9971	43.94	110-120	55.69	851.9	91.4,91.4
130	73.96	36.68	1.298	36.41	74.35	37.48	1.198	33.59	120-130	38.79	890.7	95.6,95.6
140	49.96	23.18	1.535	22.30	51.55	23.28	1.359	19.85	130-140	23.68	914.4	98.1,98.1
150	29.51	12.95	1.666	10.17	29.85	11.06	1.580	9.854	140-150	11.76	926.2	99.4,99.4
160	11.66	5.880	1.900	3.543	11.90	3.775	1.867	3.405	150-160	4.317	930.5	99.9,99.9
170	2.695	2.654	2.185	2.466	3.002	2.193	2.148	2.268	160-170	1.037	931.5	100,100
180	2.034	2.355	2.355	2.373	2.001	2.342	2.389	2.360	170-180	0.2199	931.7	100,100
DEG	LUMINOUS INTENSITY:cd								UNIT:lm			

C Range: 0 - 360DEG  
 C Interval: 45.0DEG  
 Test Speed: HIGH  
 Temperature:25.3DEG  
 Operators:JYH  
 Test Date:2019-12-25

g Range: 0 - 180DEG  
 Interval: 1.0DEG  
 Test System:EVERFINE GO-2000A\_V1 SYSTEM V2.0.362  
 Humidity:65.0%  
 Test Distance:10.950m [K=1.0000]  
 Remarks:

LUMINANCE LIMITATION CURVES

Test:U:24.00V I:0.5660A P:13.50W PF:1.000 Freq:0Hz Lamp Flux:931.732x1 lm		
NAME: NNR25	TYPE:	WEIGHT:
SPEC.: NNR25-9NW24CSN050CC0100	DIM.: 1000*25	SERIAL No.:
MFR.: COLORS	SUR.:1000*25	Shielding Angle:



LUMINANCE cd/(m2)		
G(DEG)	C0/180	C90/270
85	59677	3403
80	30563	3573
75	20865	3822
70	15964	4091
65	12991	4314
60	11013	4487
55	9695	4618
50	8719	4727
45	7949	4824

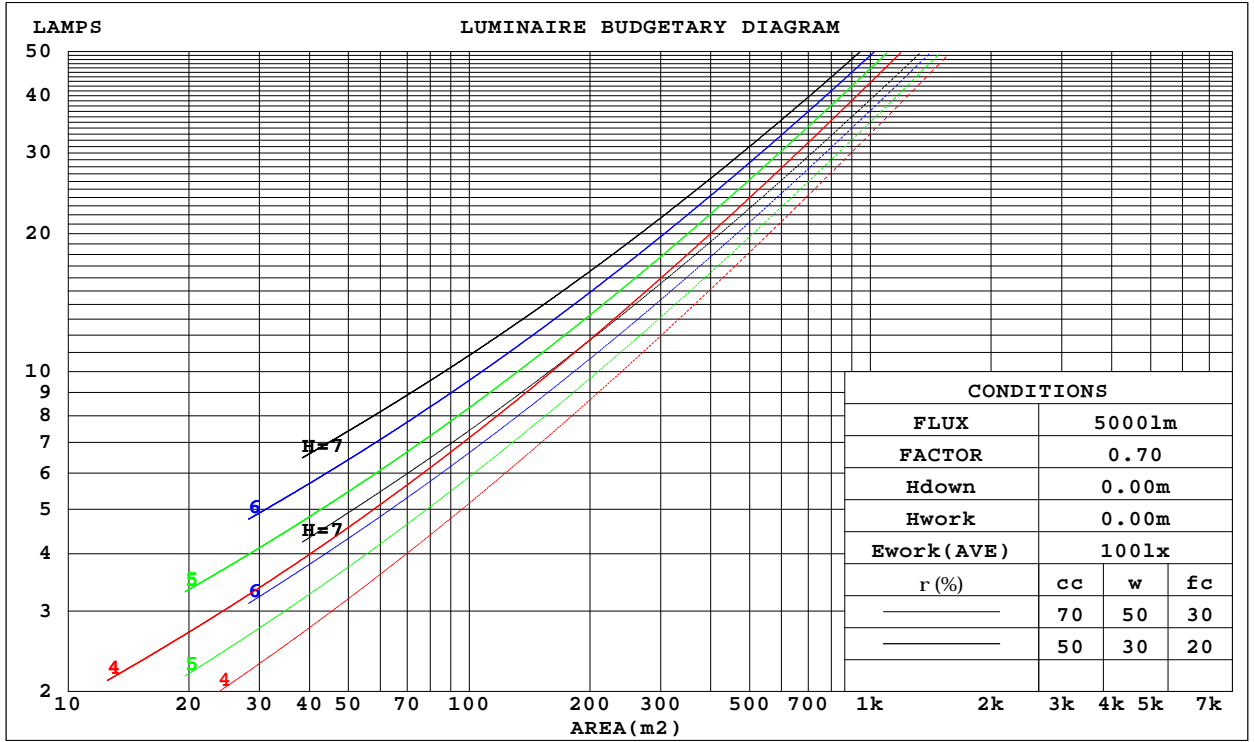
C Range: 0 - 360DEG  
 C Interval: 45.0DEG  
 Test Speed: HIGH  
 Temperature:25.3DEG  
 Operators:JYH  
 Test Date:2019-12-25

G Range: 0 - 180DEG  
 Interval: 1.0DEG  
 Test System:EVERFINE GO-2000A\_V1 SYSTEM V2.0.362  
 Humidity:65.0%  
 Test Distance:10.950m [K=1.0000]  
 Remarks:

CU AND LUMINAIRE BUDGETARY ESTIMATE DIAGRAM

Test:U:24.00V I:0.5660A P:13.50W PF:1.000 Freq:0Hz Lamp Flux:931.732x1 lm		
NAME: NNR25	TYPE:	WEIGHT:
SPEC.:NNR25-9NW24CSN050CC0100	DIM.: 1000*25	SERIAL No.:
MFR.: COLORS	SUR.:1000*25	Shielding Angle:

r <sub>cc</sub>	80%			70%			50%			30%			10%			0
r <sub>w</sub>	50%	30%	10%	50%	30%	10%	50%	30%	10%	50%	30%	10%	50%	30%	10%	0
r <sub>fc</sub>	20%			20%			20%			20%			20%			0
RCR	RCR:Room Cavity Ratio						Coefficients of Utilization(CU)									
0.0	1.12	1.12	1.12	1.06	1.06	1.06	.94	.94	.94	.84	.84	.84	.74	.74	.74	.69
1.0	.91	.86	.81	.86	.81	.76	.76	.72	.68	.67	.64	.61	.58	.56	.54	.49
2.0	.78	.69	.63	.73	.66	.59	.64	.58	.53	.56	.52	.48	.49	.45	.42	.38
3.0	.67	.58	.50	.63	.55	.48	.55	.49	.43	.49	.43	.39	.42	.38	.34	.30
4.0	.58	.49	.42	.55	.46	.40	.49	.41	.36	.43	.37	.32	.37	.32	.28	.25
5.0	.52	.42	.35	.49	.40	.33	.43	.36	.30	.38	.32	.27	.33	.28	.24	.21
6.0	.46	.37	.30	.43	.35	.29	.39	.31	.26	.34	.28	.23	.30	.25	.21	.18
7.0	.41	.32	.26	.39	.31	.25	.35	.28	.23	.31	.25	.20	.27	.22	.18	.16
8.0	.37	.29	.23	.35	.27	.22	.32	.25	.20	.28	.22	.18	.25	.20	.16	.14
9.0	.34	.26	.20	.32	.25	.19	.29	.22	.18	.26	.20	.16	.23	.18	.14	.12
10.0	.31	.23	.18	.30	.22	.17	.27	.20	.16	.24	.18	.14	.21	.16	.13	.11



C Range: 0 - 360DEG  
 C Interval: 45.0DEG  
 Test Speed: HIGH  
 Temperature:25.3DEG  
 Operators:JYH  
 Test Date:2019-12-25

Range: 0 - 180DEG  
 Interval: 1.0DEG  
 Test System:EVERFINE GO-2000A\_V1 SYSTEM V2.0.362  
 Humidity:65.0%  
 Test Distance:10.950m [K=1.0000]  
 Remarks:

WEC AND CCEC

Test:U:24.00V I:0.5660A P:13.50W PF:1.000 Freq:0Hz Lamp Flux:931.732x1 lm		
NAME: NNR25	TYPE:	WEIGHT:
SPEC.:NNR25-9NW24CSN050CC0100	DIM.: 1000*25	SERIAL No.:
MFR.: COLORS	SUR.:1000*25	Shielding Angle:

rcc	80%			70%			50%			30%			10%			0
rw	50%	30%	10%	50%	30%	10%	50%	30%	10%	50%	30%	10%	50%	30%	10%	0
rfc	20%			20%			20%			20%			20%			0
RCR	RCR:Room Cavity Ratio						Wall Exitance Coefficients(WEC)									
0.0																
1.0	.408	.232	.073	.391	.223	.071	.360	.207	.066	.331	.191	.061	.305	.177	.057	
2.0	.345	.189	.058	.330	.182	.056	.301	.168	.052	.275	.154	.048	.251	.142	.045	
3.0	.302	.161	.048	.289	.155	.047	.263	.143	.043	.239	.131	.040	.217	.120	.037	
4.0	.270	.140	.041	.258	.135	.040	.234	.124	.037	.212	.114	.034	.192	.104	.032	
5.0	.244	.124	.036	.233	.120	.035	.211	.110	.032	.191	.101	.030	.173	.092	.028	
6.0	.223	.112	.032	.213	.107	.031	.193	.099	.029	.174	.091	.027	.157	.083	.025	
7.0	.205	.101	.029	.195	.097	.028	.177	.090	.026	.160	.082	.024	.144	.075	.022	
8.0	.190	.093	.026	.181	.089	.025	.164	.082	.023	.148	.075	.022	.134	.069	.020	
9.0	.176	.085	.024	.168	.082	.023	.153	.076	.021	.138	.069	.020	.124	.063	.018	
10.0	.165	.079	.022	.157	.076	.021	.143	.070	.020	.129	.064	.018	.116	.059	.017	

rcc	80%			70%			50%			30%			10%			0
rw	50%	30%	10%	50%	30%	10%	50%	30%	10%	50%	30%	10%	50%	30%	10%	0
rfc	20%			20%			20%			20%			20%			0
RCR	RCR:Room Cavity Ratio						Ceiling Cavity Exitance Coefficients(CCEC)									
0.0	.424	.424	.424	.362	.362	.362	.247	.247	.247	.142	.142	.142	.045	.045	.045	
1.0	.423	.391	.362	.362	.335	.312	.247	.231	.216	.142	.134	.125	.046	.043	.041	
2.0	.416	.369	.329	.357	.317	.284	.244	.220	.198	.141	.128	.116	.045	.041	.038	
3.0	.409	.353	.308	.351	.304	.267	.241	.212	.187	.139	.124	.110	.045	.040	.036	
4.0	.402	.341	.295	.345	.295	.256	.237	.205	.180	.137	.120	.107	.044	.039	.035	
5.0	.394	.331	.285	.338	.287	.248	.233	.200	.175	.135	.118	.104	.043	.038	.034	
6.0	.386	.324	.279	.332	.280	.243	.229	.196	.172	.133	.115	.102	.043	.038	.034	
7.0	.379	.317	.274	.326	.275	.239	.225	.193	.169	.131	.114	.101	.042	.037	.033	
8.0	.373	.312	.270	.321	.271	.236	.222	.190	.167	.129	.112	.100	.042	.037	.033	
9.0	.366	.307	.267	.316	.267	.233	.219	.188	.166	.127	.111	.099	.041	.036	.033	
10.0	.361	.303	.265	.311	.263	.231	.216	.185	.164	.126	.110	.098	.041	.036	.033	

C Range: 0 - 360DEG  
 C Interval: 45.0DEG  
 Test Speed: HIGH  
 Temperature:25.3DEG  
 Operators:JYH  
 Test Date:2019-12-25

g Range: 0 - 180DEG  
 g Interval: 1.0DEG  
 Test System:EVERFINE GO-2000A\_V1 SYSTEM V2.0.362  
 Humidity:65.0%  
 Test Distance:10.950m [K=1.0000]  
 Remarks:

UGR(Unified Glare Rating) Table

Test:U:24.00V I:0.5660A P:13.50W PF:1.000 Freq:0Hz Lamp Flux:931.732x1 lm										
NAME: NNR25					TYPE:			WEIGHT:		
SPEC.:NNR25-9NW24CSN050CC0100					DIM.: 1000*25			SERIAL No.:		
MFR.: COLORS					SUR.:1000*25			Shielding Angle:		
ceiling/cavity	0.7	0.7	0.5	0.5	0.3	0.7	0.7	0.5	0.5	0.3
walls	0.5	0.3	0.5	0.3	0.3	0.5	0.3	0.5	0.3	0.3
working plane	0.2	0.2	0.2	0.2	0.2	0.2	0.2	0.2	0.2	0.2
Room dimensions	Viewed crosswise					Viewed endwise				
x = 2H y = 2H	19.5	20.8	20.2	21.5	22.3	16.4	17.7	17.1	18.4	19.2
3H	22.8	23.9	23.4	24.6	25.5	18.1	19.2	18.7	19.9	20.8
4H	24.6	25.7	25.3	26.4	27.3	18.8	19.9	19.5	20.6	21.5
6H	26.7	27.7	27.4	28.4	29.3	19.3	20.3	20.0	21.1	22.0
8H	27.8	28.8	28.5	29.5	30.5	19.5	20.5	20.2	21.3	22.2
12H	29.1	30.1	29.8	30.8	31.7	19.6	20.6	20.4	21.4	22.3
4H 2H	20.1	21.2	20.8	21.9	22.8	18.0	19.1	18.7	19.8	20.7
3H	23.5	24.5	24.3	25.2	26.2	20.0	20.9	20.7	21.7	22.6
4H	25.5	26.4	26.3	27.2	28.1	21.0	21.8	21.7	22.6	23.6
6H	27.8	28.6	28.6	29.4	30.4	21.8	22.6	22.6	23.4	24.3
8H	29.1	29.8	29.9	30.6	31.6	22.1	22.8	22.9	23.7	24.6
12H	30.5	31.2	31.3	32.0	33.0	22.3	23.0	23.2	23.9	24.9
8H 4H	25.9	26.6	26.7	27.4	28.4	22.5	23.2	23.3	24.1	25.0
6H	28.4	29.1	29.3	29.9	30.9	23.8	24.5	24.7	25.3	26.3
8H	29.9	30.5	30.8	31.3	32.4	24.4	25.0	25.3	25.9	26.9
12H	31.6	32.1	32.5	33.0	34.1	25.0	25.5	25.8	26.3	27.4
12H 4H	25.9	26.6	26.7	27.4	28.4	23.0	23.7	23.8	24.5	25.5
6H	28.6	29.1	29.4	30.0	31.0	24.6	25.2	25.5	26.1	27.1
8H	30.2	30.7	31.0	31.5	32.6	25.5	26.0	26.3	26.8	27.9
Variations with the observer position at spacings:										
S = 1.0H	+ 0.1 / - 0.1					+ 0.1 / - 0.1				
1.5H	+ 0.2 / - 0.2					+ 0.2 / - 0.3				
2.0H	+ 0.2 / - 0.3					+ 0.3 / - 0.4				

CIE Pub.117, 931.7 lm Total Lamp Luminous Flux Correct (8log(F/F0) = -0.2)

C Range: 0 - 360DEG  
 C Interval: 45.0DEG  
 Test Speed: HIGH  
 Temperature:25.3DEG  
 Operators:JYH  
 Test Date:2019-12-25

g Range: 0 - 180DEG  
 g Interval: 1.0DEG  
 Test System:EVERFINE GO-2000A\_V1 SYSTEM V2.0.362  
 Humidity:65.0%  
 Test Distance:10.950m [K=1.0000]  
 Remarks:

UTILIZATION FACTORS TABLE

Test:U:24.00V I:0.5660A P:13.50W PF:1.000 Freq:0Hz Lamp Flux:931.732x1 lm		
NAME: NNR25	TYPE:	WEIGHT:
SPEC.:NNR25-9NW24CSN050CC0100	DIM.: 1000*25	SERIAL No.:
MFR.: COLORS	SUR.:1000*25	Shielding Angle:

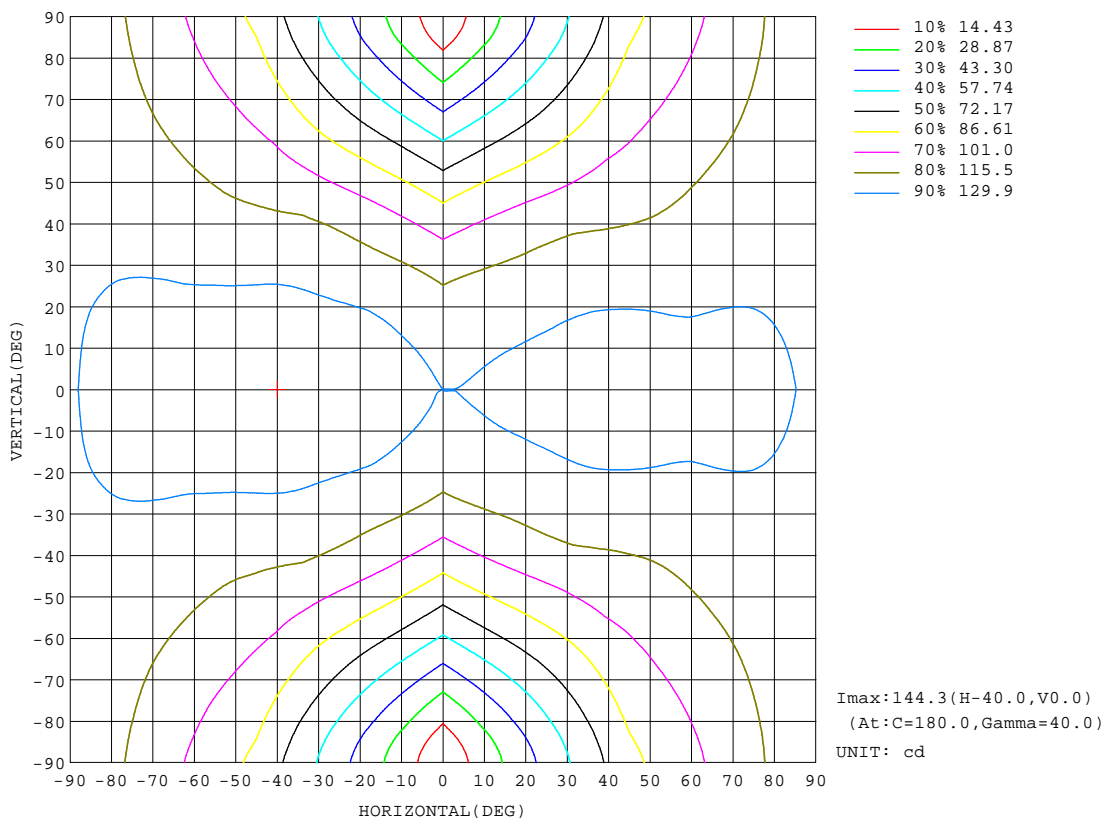
REFLECTANCE										
Ceiling	0.8	0.8	0.8	0.7	0.7	0.7	0.5	0.5	0.5	0
Walls	0.7	0.5	0.3	0.7	0.5	0.3	0.7	0.5	0.3	0
Working plane	0.2	0.2	0.2	0.2	0.2	0.2	0.2	0.2	0.2	0
ROOM INDEX	UTILIZATION FACTORS(PERCENT) $k(RI) \times RCR = 5$									
k = 0.60	42	29	22	41	29	22	38	28	21	14
0.80	51	37	29	49	36	28	45	34	27	19
1.00	58	45	36	56	43	35	51	43	33	24
1.25	65	52	42	62	50	41	57	46	39	28
1.50	70	57	48	67	55	46	61	51	44	31
2.00	78	66	57	74	63	55	67	58	51	37
2.50	83	71	63	78	68	60	71	62	56	40
3.00	87	76	68	82	73	65	74	66	60	43
4.00	92	83	75	87	79	72	78	71	66	48
5.00	95	87	80	90	83	77	80	75	70	51
ROOM INDEX	UF(total)									Direct
According to DIN EN 13032-2 2004			Suspended				SHRNOM = 1.25			

C Range: 0 - 360DEG  
 C Interval: 45.0DEG  
 Test Speed: HIGH  
 Temperature:25.3DEG  
 Operators:JYH  
 Test Date:2019-12-25

g Range: 0 - 180DEG  
 Interval: 1.0DEG  
 Test System:EVERFINE GO-2000A\_V1 SYSTEM V2.0.362  
 Humidity:65.0%  
 Test Distance:10.950m [K=1.0000]  
 Remarks:

ISOCANDELA DIAGRAM

Test:U:24.00V I:0.5660A P:13.50W PF:1.000 Freq:0Hz Lamp Flux:931.732x1 lm		
NAME: NNR25	TYPE:	WEIGHT:
SPEC.:NNR25-9NW24CSN050CC0100	DIM.: 1000*25	SERIAL No.:
MFR.: COLORS	SUR.:1000*25	Shielding Angle:



C Range: 0 - 360DEG  
 C Interval: 45.0DEG  
 Test Speed: HIGH  
 Temperature:25.3DEG  
 Operators:JYH  
 Test Date:2019-12-25

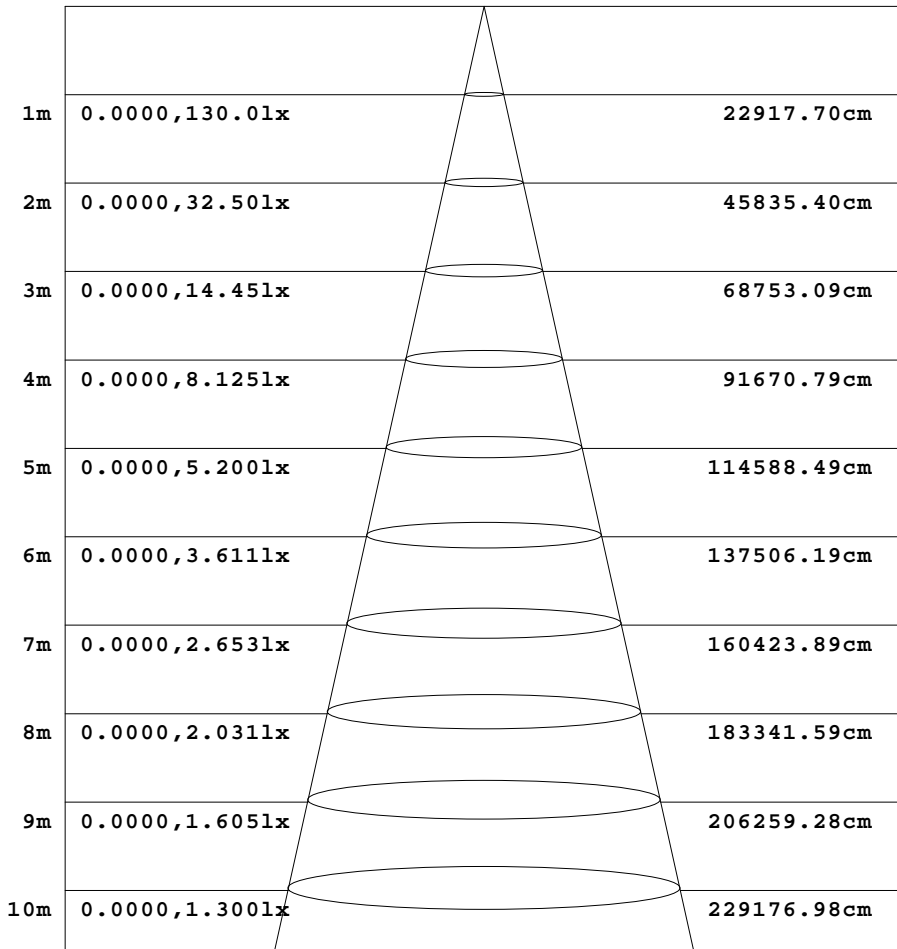
Range: 0 - 180DEG  
 Interval: 1.0DEG  
 Test System:EVERFINE GO-2000A\_V1 SYSTEM V2.0.362  
 Humidity:65.0%  
 Test Distance:10.950m [K=1.0000]  
 Remarks:



AAI Figure

Test:U:24.00V I:0.5660A P:13.50W PF:1.000 Freq:0Hz Lamp Flux:931.732x1 lm		
NAME: NNR25	TYPE:	WEIGHT:
SPEC.:NNR25-9NW24CSN050CC0100	DIM.: 1000*25	SERIAL No.:
MFR.: COLORS	SUR.:1000*25	Shielding Angle:

Flux out:646.0 lm



Height                      Eavg, Emax                      Angle:179.00deg                      Diameter

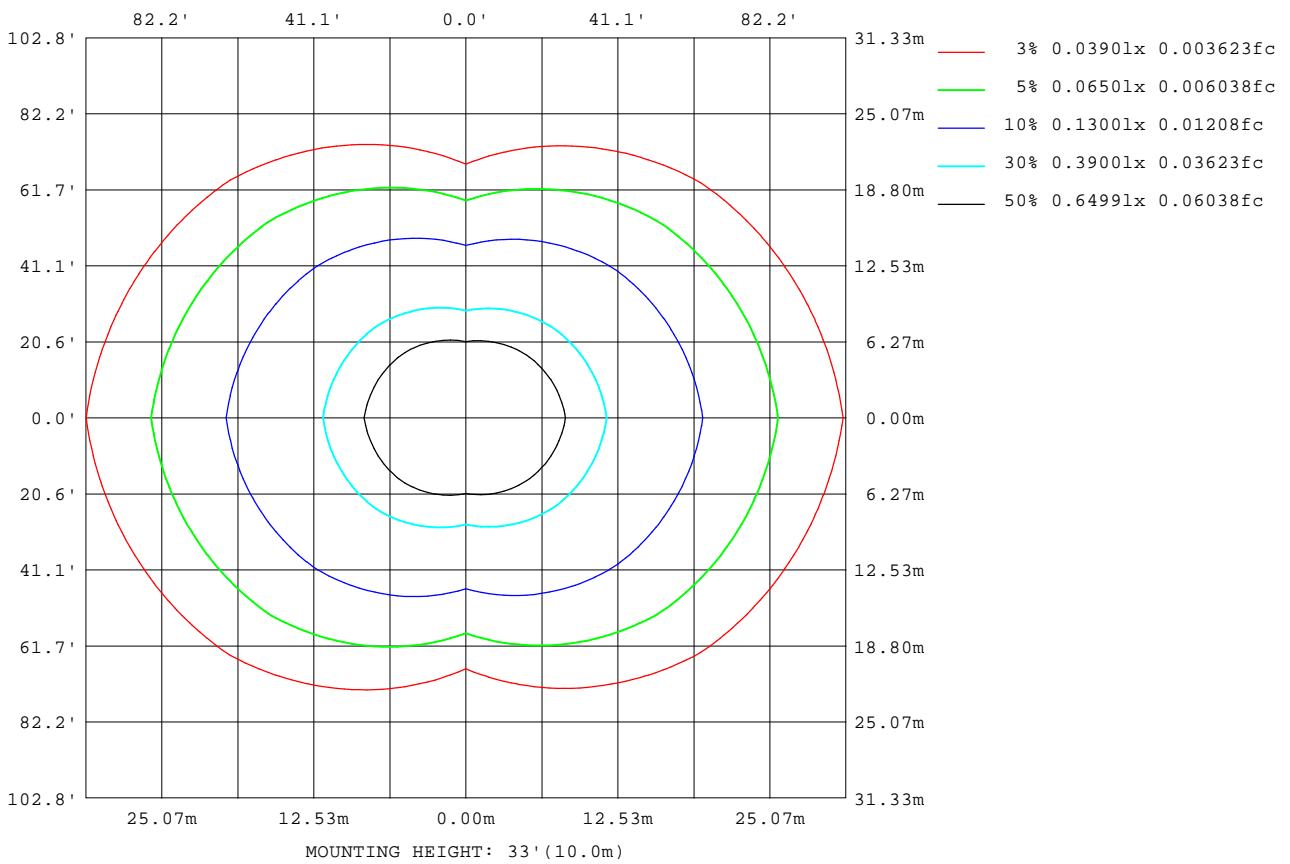
Note:The Curves indicate the illuminated area and the average illumination when the luminaire is at different distance.

C Range: 0 - 360DEG  
 C Interval: 45.0DEG  
 Test Speed: HIGH  
 Temperature:25.3DEG  
 Operators:JYH  
 Test Date:2019-12-25

Range: 0 - 180DEG  
 Interval: 1.0DEG  
 Test System:EVERFINE GO-2000A\_V1 SYSTEM V2.0.362  
 Humidity:65.0%  
 Test Distance:10.950m [K=1.0000]  
 Remarks:

ISOLUX DIAGRAM

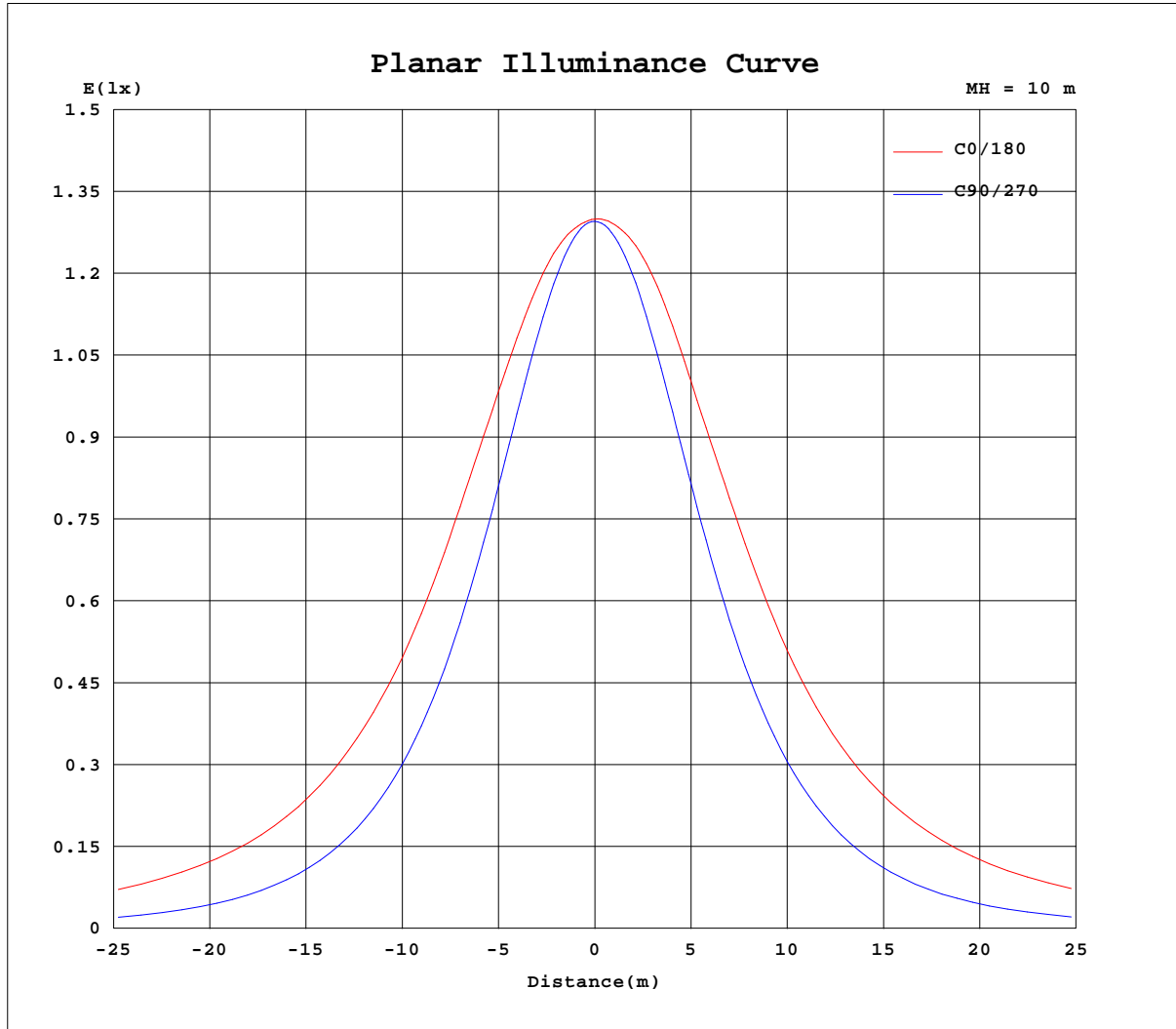
Test:U:24.00V I:0.5660A P:13.50W PF:1.000 Freq:0Hz Lamp Flux:931.732x1 lm		
NAME: NNR25	TYPE:	WEIGHT:
SPEC.:NNR25-9NW24CSN050CC0100	DIM.: 1000*25	SERIAL No.:
MFR.: COLORS	SUR.:1000*25	Shielding Angle:



C Range: 0 - 360DEG  
 C Interval: 45.0DEG  
 Test Speed: HIGH  
 Temperature:25.3DEG  
 Operators:JYH  
 Test Date:2019-12-25

Range: 0 - 180DEG  
 Interval: 1.0DEG  
 Test System:EVERFINE GO-2000A\_V1 SYSTEM V2.0.362  
 Humidity:65.0%  
 Test Distance:10.950m [K=1.0000]  
 Remarks:

Planar Illuminance Curve



C Range: 0 - 360DEG  
 C Interval: 45.0DEG  
 Test Speed: HIGH  
 Temperature: 25.3DEG  
 Operators: JYH  
 Test Date: 2019-12-25

Page Range: 0 - 180DEG  
 Interval: 1.0DEG  
 Test System: EVERFINE GO-2000A\_V1 SYSTEM V2.0.362  
 Humidity: 65.0%  
 Test Distance: 10.950m [K=1.0000]  
 Remarks:

LUMINOUS DISTRIBUTION INTENSITY DATA

Test:U:24.00V I:0.5660A P:13.50W PF:1.000 Freq:0Hz Lamp Flux:931.732x1 lm		
NAME: NNR25	TYPE:	WEIGHT:
SPEC.:NNR25-9NW24CSN050CC0100	DIM.: 1000*25	SERIAL No.:
MFR.: COLORS	SUR.:1000*25	Shielding Angle:

Table--1

UNIT: cd

C(DEG) g (DEG)	0	45	90	135	180	225	270	315										
0	130	130	130	130	130	130	130	130										
5	130	129	129	130	131	130	129	129										
10	131	129	128	131	132	131	128	129										
15	133	128	125	131	135	131	125	128										
20	135	128	121	131	137	131	121	127										
25	137	126	115	130	139	130	116	126										
30	139	124	109	128	141	128	110	124										
35	140	122	102	126	143	126	103	122										
40	141	120	94.1	124	144	124	95.2	120										
45	140	117	85.4	121	144	121	86.8	117										
50	140	113	76.1	117	143	117	77.7	113										
55	139	108	66.3	112	143	112	68.0	109										
60	137	104	56.2	107	142	107	57.9	104										
65	137	99.8	45.7	103	141	103	47.5	100										
70	136	96.3	35.0	98.8	139	98.9	37.1	96.9										
75	135	93.1	24.8	95.2	137	95.2	27.0	93.6										
80	132	89.7	15.5	91.2	134	91.4	17.7	90.2										
85	130	86.2	7.43	87.3	131	87.5	8.95	86.6										
90	127	83.0	3.61	83.5	129	83.8	4.61	83.2										
95	126	81.0	3.26	81.0	127	81.4	3.95	77.2										
100	124	79.0	0.82	78.8	124	79.2	0.56	76.2										
105	119	76.4	0.79	75.8	120	76.1	0.66	68.8										
110	114	69.1	0.82	69.3	115	70.0	0.76	61.0										
115	106	61.0	0.94	60.9	107	60.9	0.89	48.6										
120	97.4	51.5	1.06	51.3	96.6	52.0	1.00	43.9										
125	86.4	43.8	1.20	43.2	85.7	44.9	1.10	38.3										
130	74.0	36.7	1.30	36.4	74.4	37.5	1.20	33.6										
135	61.5	29.5	1.39	29.3	62.8	30.1	1.28	26.2										
140	50.0	23.2	1.53	22.3	51.6	23.3	1.36	19.8										
145	38.3	17.6	1.62	15.8	40.5	16.7	1.44	14.4										
150	29.5	12.9	1.67	10.2	29.9	11.1	1.58	9.85										
155	19.8	9.17	1.80	5.96	20.1	6.48	1.74	6.27										
160	11.7	5.88	1.90	3.54	11.9	3.78	1.87	3.40										
165	5.35	3.76	2.04	2.53	5.67	2.28	2.01	2.21										
170	2.70	2.65	2.19	2.47	3.00	2.19	2.15	2.27										
175	2.05	2.27	2.30	2.40	1.91	2.20	2.29	2.34										
180	2.03	2.36	2.36	2.37	2.00	2.34	2.39	2.36										

C Range: 0 - 360DEG  
 C Interval: 45.0DEG  
 Test Speed: HIGH  
 Temperature:25.3DEG  
 Operators:JYH  
 Test Date:2019-12-25

g Range: 0 - 180DEG  
 g Interval: 1.0DEG  
 Test System:EVERFINE GO-2000A\_V1 SYSTEM V2.0.362  
 Humidity:65.0%  
 Test Distance:10.950m [K=1.0000]  
 Remarks: