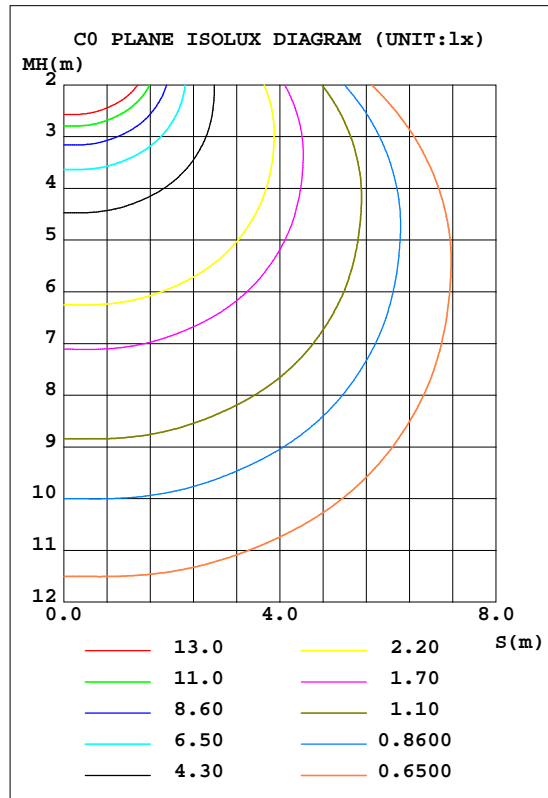
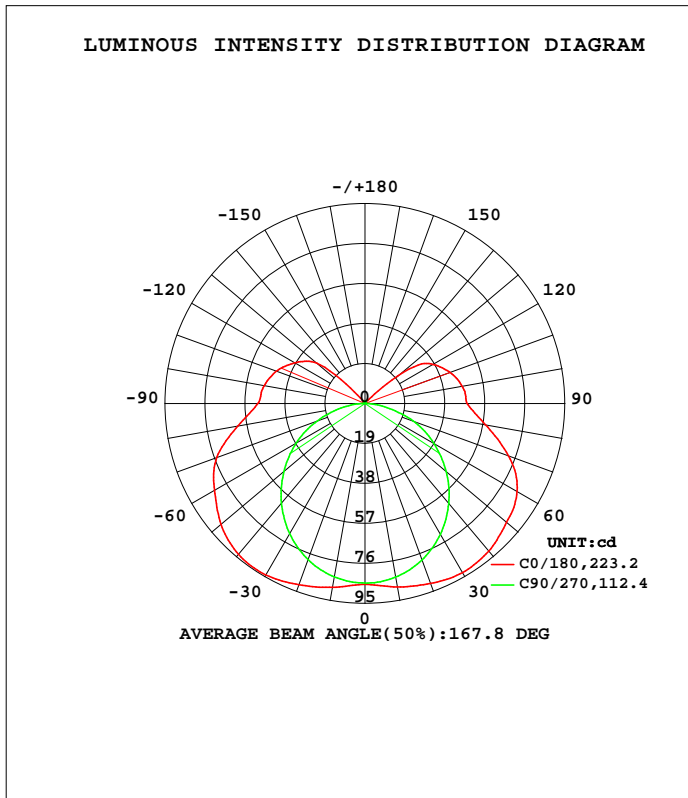


LUMINAIRE PHOTOMETRIC TEST REPORT

Test:U:24.00V I:0.4167A P:10.000W PF:1.000 Freq:0Hz Lamp Flux:480.036x1 lm		
NAME: NMT1010	TYPE:	WEIGHT:
SPEC.:NMT1010-9LW24NSN000CC0100	DIM.: 1000*10*10mm	SERIAL No.:
MFR.: COLORS	SUR.:1000*10mm	Shielding Angle:

DATA OF LAMP		PHOTOMETRIC DATA Eff: 48.00 lm/W			
MODEL	NMT1010	I _{max} (cd)	94.32	S/MH(C0/180)	1.63
NOMINAL POWER(W)	9.6	LOR(%)	100.0	S/MH(C90/270)	1.25
RATED VOLTAGE(V)	24	TOTAL FLUX(lm)	480.04	h UP, DN(C0-180)	10.0, 39.8
NOMINAL FLUX(lm)	480.036	CIE CLASS	SEMI-D.	h UP, DN(C180-360)	10.2, 40.0
LAMPS INSIDE	1	h up(%)	20.2	CIBSE SHR NOM	1.50
TEST VOLTAGE(V)	24	h down(%)	79.8	CIBSE SHR MAX	1.55



C Range: 0 - 360DEG
 C Interval: 45.0DEG
 Test Speed: HIGH
 Temperature:25.3DEG
 Operators:JYH
 Test Date:2020-10-15

Range: 0 - 180DEG
 Interval: 1.0DEG
 Test System:EVERFINE GO-2000A_V1 SYSTEM V2.0.362
 Humidity:65.0%
 Test Distance:10.950m [K=1.0000]
 Remarks:

ZONAL FLUX DIAGRAM

ZONAL FLUX DIAGRAM:

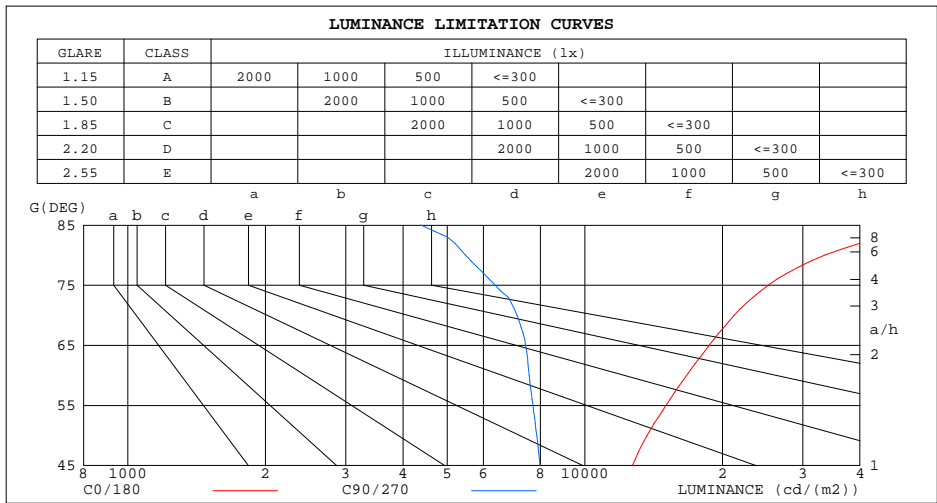
g	C0	C45	C90	C135	C180	C225	C270	C315	g	F zone	F total	%lum,lamp
10	88.51	86.50	83.80	86.24	88.68	86.71	83.70	85.94	0- 10	8.212	8.212	1.71,1.71
20	90.96	86.17	79.15	86.06	91.67	86.72	79.05	85.52	10- 20	24.40	32.61	6.79,6.79
30	92.73	84.12	71.77	84.16	94.10	84.93	71.55	83.19	20- 30	39.14	71.75	14.9,14.9
40	91.56	80.43	61.99	80.71	93.56	81.44	61.80	79.29	30- 40	51.00	122.8	25.6,25.6
50	87.89	73.84	50.47	74.53	89.37	75.29	50.35	72.58	40- 50	58.40	181.2	37.7,37.7
60	83.49	65.83	37.75	65.63	82.54	66.25	37.87	64.45	50- 60	60.48	241.6	50.3,50.3
70	72.58	56.04	24.30	55.36	74.99	56.09	24.02	54.53	60- 70	57.37	299.0	62.3,62.3
80	58.11	42.61	9.522	43.52	61.23	44.16	10.33	41.26	70- 80	48.12	347.1	72.3,72.3
90	48.62	31.37	0.7548	33.25	50.97	33.80	1.362	31.42	80- 90	36.17	383.3	79.8,79.8
100	47.02	29.80	0.3741	30.74	48.75	31.41	0.2475	26.55	90-100	30.26	413.5	86.1,86.1
110	43.17	27.20	0.4140	28.45	44.90	29.02	0.4343	24.52	100-110	27.55	441.1	91.9,91.9
120	37.31	15.57	0.6078	22.07	38.72	22.83	0.5945	13.85	110-120	22.06	463.1	96.5,96.5
130	20.40	1.455	0.7611	3.067	29.85	2.730	0.7282	1.163	120-130	11.94	475.1	99,99
140	2.006	1.256	0.8748	1.363	3.468	1.102	0.8483	1.136	130-140	3.130	478.2	99.6,99.6
150	1.590	1.149	0.9685	1.262	1.302	1.169	0.9555	1.102	140-150	0.7764	479.0	99.8,99.8
160	1.409	1.156	1.142	1.323	1.269	1.256	1.162	1.102	150-160	0.5565	479.5	99.9,99.9
170	1.350	1.296	1.342	1.396	1.175	1.356	1.363	1.249	160-170	0.3584	479.9	100,100
180	1.222	1.476	1.476	1.476	1.202	1.476	1.496	1.469	170-180	0.1283	480.0	100,100
DEG	LUMINOUS INTENSITY:cd									UNIT:lm		

C Range: 0 - 360DEG
 C Interval: 45.0DEG
 Test Speed: HIGH
 Temperature:25.3DEG
 Operators:JYH
 Test Date:2020-10-15

g Range: 0 - 180DEG
 Interval: 1.0DEG
 Test System:EVERFINE GO-2000A_V1 SYSTEM V2.0.362
 Humidity:65.0%
 Test Distance:10.950m [K=1.0000]
 Remarks:

LUMINANCE LIMITATION CURVES

Test:U:24.00V I:0.4167A P:10.000W PF:1.000 Freq:0Hz Lamp Flux:480.036x1 lm		
NAME: NMT1010	TYPE:	WEIGHT:
SPEC.:NMT1010-9LW24NSN000CC0100	DIM.: 1000*10*10mm	SERIAL No.:
MFR.: COLORS	SUR.:1000*10mm	Shielding Angle:



LUMINANCE cd/(m2)		
G(DEG)	C0/180	C90/270
85	60169	4381
80	33467	5483
75	25183	6371
70	21221	7104
65	18711	7424
60	16697	7550
55	15051	7700
50	13673	7851
45	12705	7976

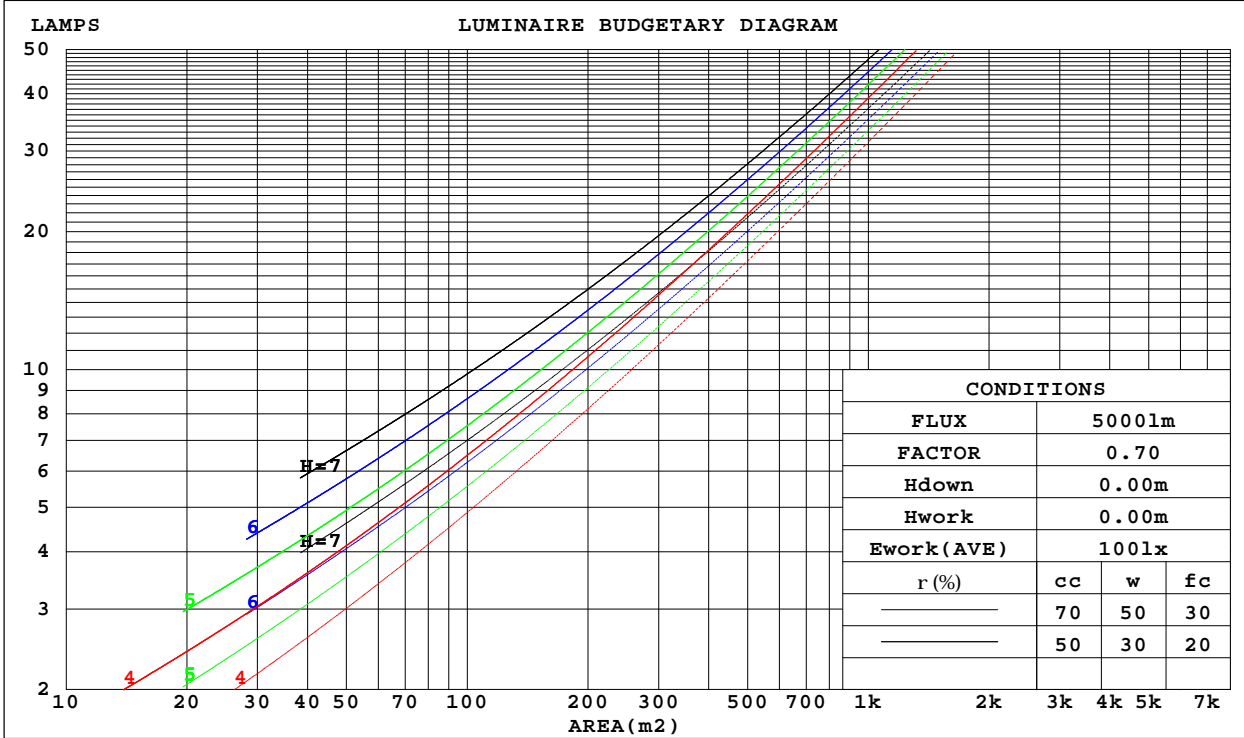
C Range: 0 - 360DEG
 C Interval: 45.0DEG
 Test Speed: HIGH
 Temperature:25.3DEG
 Operators:JYH
 Test Date:2020-10-15

G Range: 0 - 180DEG
 G Interval: 1.0DEG
 Test System:EVERFINE GO-2000A_V1 SYSTEM V2.0.362
 Humidity:65.0%
 Test Distance:10.950m [K=1.0000]
 Remarks:

CU AND LUMINAIRE BUDGETARY ESTIMATE DIAGRAM

Test:U:24.00V I:0.4167A P:10.000W PF:1.000 Freq:0Hz Lamp Flux:480.036x1 lm		
NAME: NMT1010	TYPE:	WEIGHT:
SPEC.:NMT1010-9LW24NSN000CC0100	DIM.: 1000*10*10mm	SERIAL No.:
MFR.: COLORS	SUR.:1000*10mm	Shielding Angle:

r _{cc}	80%			70%			50%			30%			10%			0
r _w	50%	30%	10%	50%	30%	10%	50%	30%	10%	50%	30%	10%	50%	30%	10%	0
r _{fc}	20%			20%			20%			20%			20%			0
RCR	RCR:Room Cavity Ratio						Coefficients of Utilization(CU)									
0.0	1.14	1.14	1.14	1.09	1.09	1.09	.00	.00	.00	.91	.91	.91	.84	.84	.84	.80
1.0	.95	.89	.84	.90	.86	.81	.82	.78	.75	.75	.72	.69	.68	.66	.63	.60
2.0	.81	.73	.66	.77	.70	.64	.70	.64	.59	.64	.59	.55	.58	.54	.50	.47
3.0	.70	.60	.53	.66	.58	.51	.61	.54	.48	.55	.49	.44	.50	.45	.41	.38
4.0	.61	.51	.44	.58	.49	.43	.53	.46	.40	.48	.42	.37	.44	.39	.34	.31
5.0	.54	.44	.37	.52	.43	.36	.47	.40	.34	.43	.37	.32	.39	.34	.29	.27
6.0	.48	.39	.32	.46	.37	.31	.42	.35	.29	.39	.32	.27	.35	.30	.25	.23
7.0	.43	.34	.28	.41	.33	.27	.38	.31	.25	.35	.28	.24	.32	.26	.22	.20
8.0	.39	.30	.24	.38	.29	.24	.35	.27	.22	.32	.26	.21	.29	.24	.20	.17
9.0	.36	.27	.22	.34	.26	.21	.32	.25	.20	.29	.23	.19	.27	.21	.18	.15
10.0	.33	.25	.19	.32	.24	.19	.29	.22	.18	.27	.21	.17	.25	.20	.16	.14



C Range: 0 - 360DEG
 C Interval: 45.0DEG
 Test Speed: HIGH
 Temperature:25.3DEG
 Operators:JYH
 Test Date:2020-10-15

Range: 0 - 180DEG
 Interval: 1.0DEG
 Test System:EVERFINE GO-2000A_V1 SYSTEM V2.0.362
 Humidity:65.0%
 Test Distance:10.950m [K=1.0000]
 Remarks:

WEC AND CCEC

Test:U:24.00V I:0.4167A P:10.000W PF:1.000 Freq:0Hz Lamp Flux:480.036x1 lm		
NAME: NMT1010	TYPE:	WEIGHT:
SPEC.:NMT1010-9LW24NSN000CC0100	DIM.: 1000*10*10mm	SERIAL No.:
MFR.: COLORS	SUR.:1000*10mm	Shielding Angle:

rcc	80%			70%			50%			30%			10%			0
rw	50%	30%	10%	50%	30%	10%	50%	30%	10%	50%	30%	10%	50%	30%	10%	0
rfc	20%			20%			20%			20%			20%			0
RCR	RCR:Room Cavity Ratio						Wall Exitance Coefficients(WEC)									
0.0																
1.0	.392	.223	.071	.379	.216	.069	.354	.203	.065	.331	.191	.061	.309	.179	.058	
2.0	.339	.186	.057	.327	.180	.056	.304	.169	.053	.283	.159	.050	.264	.149	.047	
3.0	.301	.160	.048	.290	.155	.047	.269	.146	.044	.250	.137	.042	.233	.129	.040	
4.0	.270	.141	.041	.261	.136	.040	.242	.128	.038	.225	.121	.036	.208	.113	.034	
5.0	.246	.125	.036	.237	.121	.035	.220	.114	.034	.204	.107	.032	.189	.101	.030	
6.0	.225	.113	.032	.216	.109	.031	.201	.103	.030	.186	.097	.028	.173	.091	.027	
7.0	.207	.102	.029	.199	.099	.028	.185	.094	.027	.172	.088	.026	.159	.083	.024	
8.0	.192	.094	.026	.185	.091	.026	.172	.086	.025	.160	.081	.023	.148	.076	.022	
9.0	.179	.086	.024	.172	.084	.024	.160	.079	.022	.149	.075	.021	.138	.070	.020	
10.0	.167	.080	.022	.161	.078	.022	.150	.073	.021	.139	.069	.020	.129	.065	.019	

rcc	80%			70%			50%			30%			10%			0
rw	50%	30%	10%	50%	30%	10%	50%	30%	10%	50%	30%	10%	50%	30%	10%	0
rfc	20%			20%			20%			20%			20%			0
RCR	RCR:Room Cavity Ratio						Ceiling Cavity Exitance Coefficients(CCEC)									
0.0	.344	.344	.344	.294	.294	.294	.201	.201	.201	.115	.115	.115	.037	.037	.037	
1.0	.341	.310	.283	.292	.266	.243	.199	.183	.168	.115	.106	.098	.037	.034	.032	
2.0	.334	.288	.248	.286	.248	.215	.196	.171	.150	.113	.100	.088	.036	.032	.029	
3.0	.327	.271	.227	.280	.234	.196	.193	.163	.138	.111	.095	.081	.036	.031	.027	
4.0	.320	.259	.213	.274	.224	.185	.189	.156	.130	.109	.091	.077	.035	.030	.025	
5.0	.312	.249	.203	.268	.216	.176	.184	.151	.125	.107	.088	.074	.034	.029	.024	
6.0	.304	.241	.196	.262	.209	.171	.181	.146	.121	.105	.086	.072	.034	.028	.024	
7.0	.297	.235	.191	.256	.203	.166	.177	.143	.118	.103	.084	.070	.033	.028	.023	
8.0	.291	.229	.187	.250	.199	.163	.173	.140	.116	.101	.082	.069	.033	.027	.023	
9.0	.284	.224	.184	.245	.195	.161	.170	.137	.114	.099	.081	.068	.032	.027	.023	
10.0	.278	.220	.182	.240	.191	.159	.166	.135	.113	.097	.080	.067	.031	.026	.022	

C Range: 0 - 360DEG
 C Interval: 45.0DEG
 Test Speed: HIGH
 Temperature:25.3DEG
 Operators:JYH
 Test Date:2020-10-15

Range: 0 - 180DEG
 Interval: 1.0DEG
 Test System:EVERFINE GO-2000A_V1 SYSTEM V2.0.362
 Humidity:65.0%
 Test Distance:10.950m [K=1.0000]
 Remarks:

UGR(Unified Glare Rating) Table

Test:U:24.00V I:0.4167A P:10.000W PF:1.000 Freq:0Hz Lamp Flux:480.036x1 lm										
NAME: NMT1010					TYPE:			WEIGHT:		
SPEC.:NMT1010-9LW24NSN000CC0100					DIM.: 1000*10*10mm			SERIAL No.:		
MFR.: COLORS					SUR.:1000*10mm			Shielding Angle:		
ceiling/cavity	0.7	0.7	0.5	0.5	0.3	0.7	0.7	0.5	0.5	0.3
walls	0.5	0.3	0.5	0.3	0.3	0.5	0.3	0.5	0.3	0.3
working plane	0.2	0.2	0.2	0.2	0.2	0.2	0.2	0.2	0.2	0.2
Room dimensions	Viewed crosswise					Viewed endwise				
x = 2H y = 2H	24.2	25.5	24.7	26.1	26.7	21.4	22.8	22.0	23.3	23.9
3H	26.9	28.2	27.5	28.8	29.4	23.1	24.3	23.6	24.9	25.5
4H	28.4	29.6	29.0	30.2	30.8	23.7	24.9	24.3	25.5	26.2
6H	29.9	31.0	30.5	31.6	32.3	24.1	25.2	24.7	25.9	26.6
8H	30.7	31.8	31.4	32.5	33.2	24.2	25.3	24.9	26.0	26.7
12H	31.7	32.8	32.4	33.4	34.1	24.3	25.4	24.9	26.0	26.7
4H 2H	24.7	25.9	25.3	26.5	27.2	22.8	24.1	23.4	24.6	25.3
3H	27.7	28.8	28.3	29.4	30.1	24.8	25.8	25.4	26.5	27.2
4H	29.3	30.3	30.0	30.9	31.7	25.6	26.6	26.3	27.2	28.0
6H	31.0	31.9	31.7	32.6	33.4	26.2	27.1	26.9	27.8	28.6
8H	32.0	32.8	32.7	33.5	34.3	26.5	27.3	27.2	28.0	28.8
12H	33.1	33.9	33.8	34.6	35.4	26.6	27.4	27.3	28.1	28.9
8H 4H	29.6	30.5	30.3	31.1	31.9	26.8	27.6	27.4	28.3	29.1
6H	31.6	32.3	32.4	33.0	33.9	27.8	28.5	28.5	29.2	30.1
8H	32.8	33.4	33.5	34.1	35.0	28.3	28.9	29.0	29.6	30.5
12H	34.2	34.7	34.9	35.5	36.3	28.6	29.2	29.4	29.9	30.8
12H 4H	29.7	30.4	30.4	31.1	31.9	27.1	27.8	27.8	28.5	29.3
6H	31.8	32.4	32.5	33.1	34.0	28.4	29.0	29.1	29.7	30.6
8H	33.0	33.6	33.8	34.3	35.2	29.0	29.5	29.8	30.3	31.2
Variations with the observer position at spacings:										
S = 1.0H	+ 0.1 / - 0.1					+ 0.1 / - 0.1				
1.5H	+ 0.2 / - 0.2					+ 0.2 / - 0.3				
2.0H	+ 0.2 / - 0.3					+ 0.3 / - 0.5				

CIE Pub.117, 480.0 lm Total Lamp Luminous Flux Correct (8log(F/F0) = -2.5)

C Range: 0 - 360DEG
 C Interval: 45.0DEG
 Test Speed: HIGH
 Temperature:25.3DEG
 Operators:JYH
 Test Date:2020-10-15

g Range: 0 - 180DEG
 g Interval: 1.0DEG
 Test System:EVERFINE GO-2000A_V1 SYSTEM V2.0.362
 Humidity:65.0%
 Test Distance:10.950m [K=1.0000]
 Remarks:

UTILIZATION FACTORS TABLE

Test:U:24.00V I:0.4167A P:10.000W PF:1.000 Freq:0Hz Lamp Flux:480.036x1 lm		
NAME: NMT1010	TYPE:	WEIGHT:
SPEC.:NMT1010-9LW24NSN000CC0100	DIM.: 1000*10*10mm	SERIAL No.:
MFR.: COLORS	SUR.:1000*10mm	Shielding Angle:

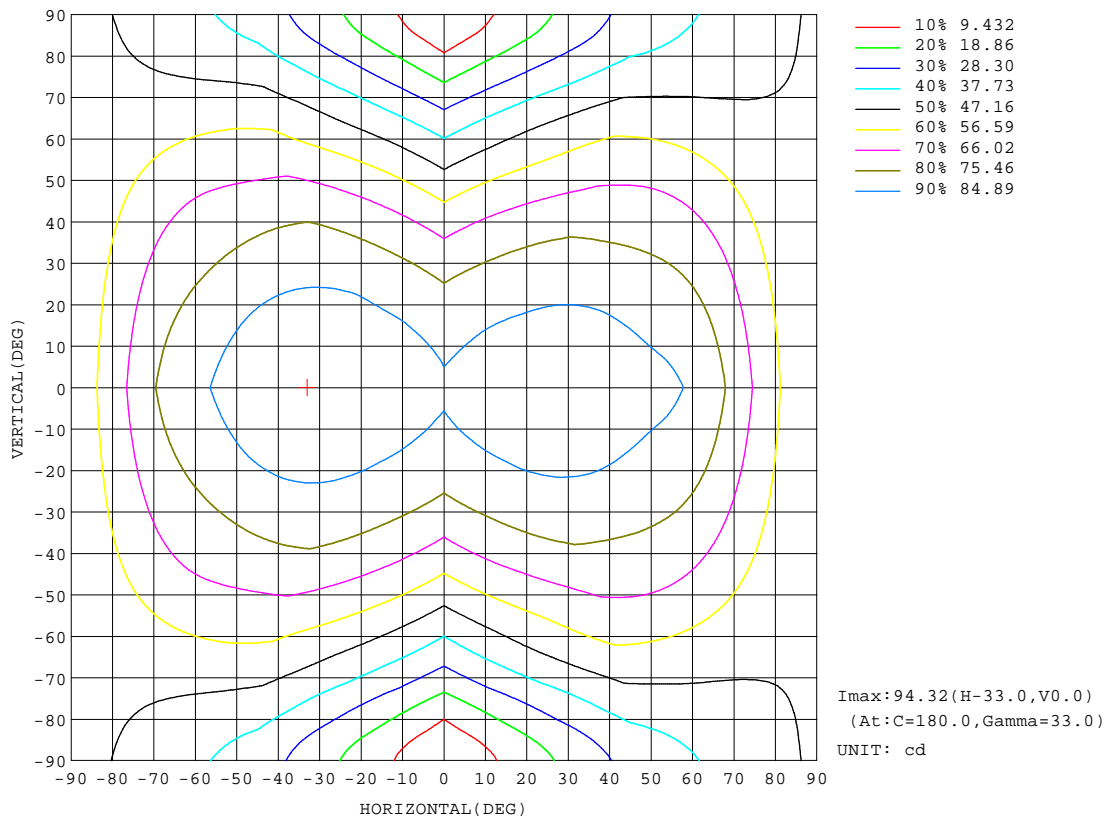
REFLECTANCE										
Ceiling	0.8	0.8	0.8	0.7	0.7	0.7	0.5	0.5	0.5	0
Walls	0.7	0.5	0.3	0.7	0.5	0.3	0.7	0.5	0.3	0
Working plane	0.2	0.2	0.2	0.2	0.2	0.2	0.2	0.2	0.2	0
ROOM INDEX	UTILIZATION FACTORS(PERCENT) k(RI) x RCR = 5									
k = 0.60	46	33	26	45	33	25	43	32	25	18
0.80	55	42	33	53	41	33	50	39	32	24
1.00	63	49	41	61	48	40	57	49	39	30
1.25	70	57	48	67	55	47	63	53	45	35
1.50	75	62	53	72	61	52	67	57	50	39
2.00	82	71	62	79	69	61	73	65	58	46
2.50	87	76	68	84	74	66	77	69	63	50
3.00	91	81	74	87	78	71	80	73	67	53
4.00	96	88	81	92	84	78	84	78	73	58
5.00	99	92	86	95	88	83	87	82	77	61
ROOM INDEX	UF(total)									Direct
According to DIN EN 13032-2 2004			Suspended				SHRNOM = 1.25			

C Range: 0 - 360DEG
 C Interval: 45.0DEG
 Test Speed: HIGH
 Temperature:25.3DEG
 Operators:JYH
 Test Date:2020-10-15

g Range: 0 - 180DEG
 Interval: 1.0DEG
 Test System:EVERFINE GO-2000A_V1 SYSTEM V2.0.362
 Humidity:65.0%
 Test Distance:10.950m [K=1.0000]
 Remarks:

ISOCANDELA DIAGRAM

Test:U:24.00V I:0.4167A P:10.000W PF:1.000 Freq:0Hz Lamp Flux:480.036x1 lm		
NAME: NMT1010	TYPE:	WEIGHT:
SPEC.:NMT1010-9LW24NSN000CC0100	DIM.: 1000*10*10mm	SERIAL No.:
MFR.: COLORS	SUR.:1000*10mm	Shielding Angle:



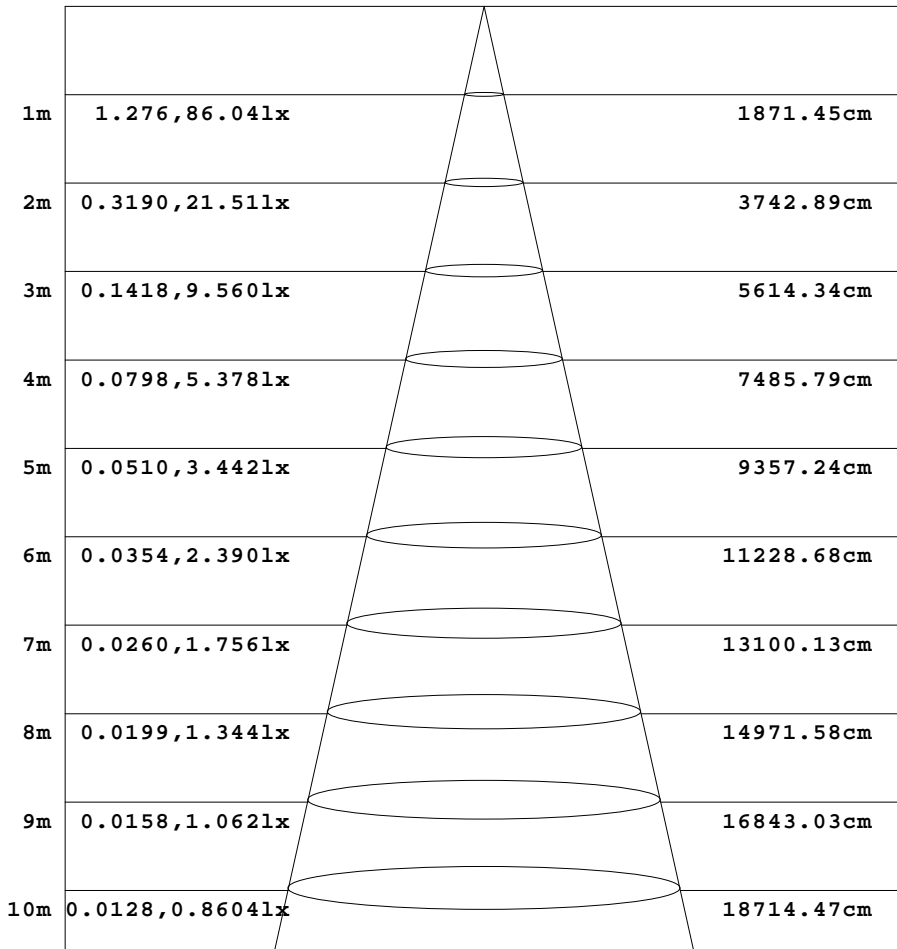
C Range: 0 - 360DEG
 C Interval: 45.0DEG
 Test Speed: HIGH
 Temperature:25.3DEG
 Operators:JYH
 Test Date:2020-10-15

Range: 0 - 180DEG
 Interval: 1.0DEG
 Test System:EVERFINE GO-2000A_V1 SYSTEM V2.0.362
 Humidity:65.0%
 Test Distance:10.950m [K=1.0000]
 Remarks:

AAI Figure

Test:U:24.00V I:0.4167A P:10.000W PF:1.000 Freq:0Hz Lamp Flux:480.036x1 lm		
NAME: NMT1010	TYPE:	WEIGHT:
SPEC.:NMT1010-9LW24NSN000CC0100	DIM.: 1000*10*10mm	SERIAL No.:
MFR.: COLORS	SUR.:1000*10mm	Shielding Angle:

Flux out:362.9 lm



Height Eavg, Emax Angle:167.80deg Diameter

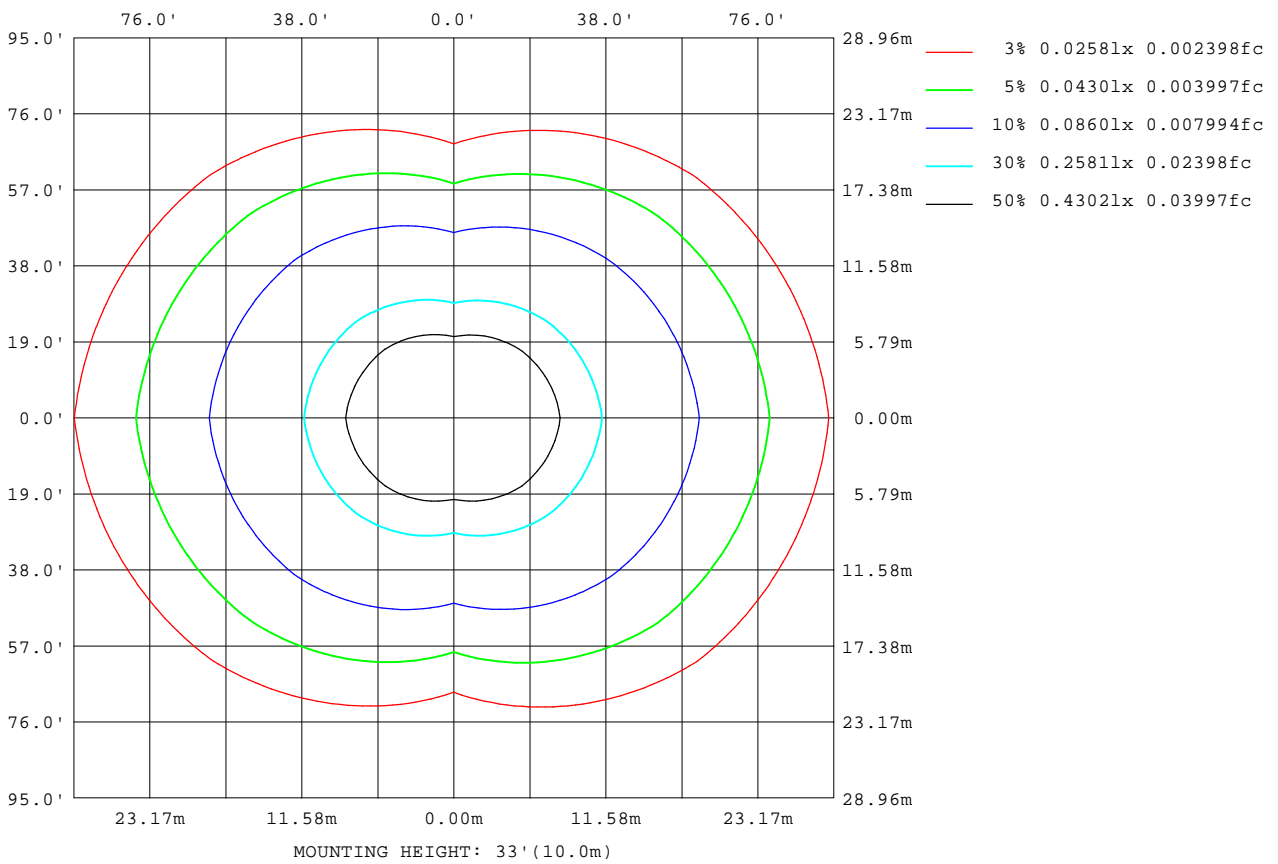
Note:The Curves indicate the illuminated area and the average illumination when the luminaire is at different distance.

C Range: 0 - 360DEG
 C Interval: 45.0DEG
 Test Speed: HIGH
 Temperature:25.3DEG
 Operators:JYH
 Test Date:2020-10-15

Range: 0 - 180DEG
 Interval: 1.0DEG
 Test System:EVERFINE GO-2000A_V1 SYSTEM V2.0.362
 Humidity:65.0%
 Test Distance:10.950m [K=1.0000]
 Remarks:

ISOLUX DIAGRAM

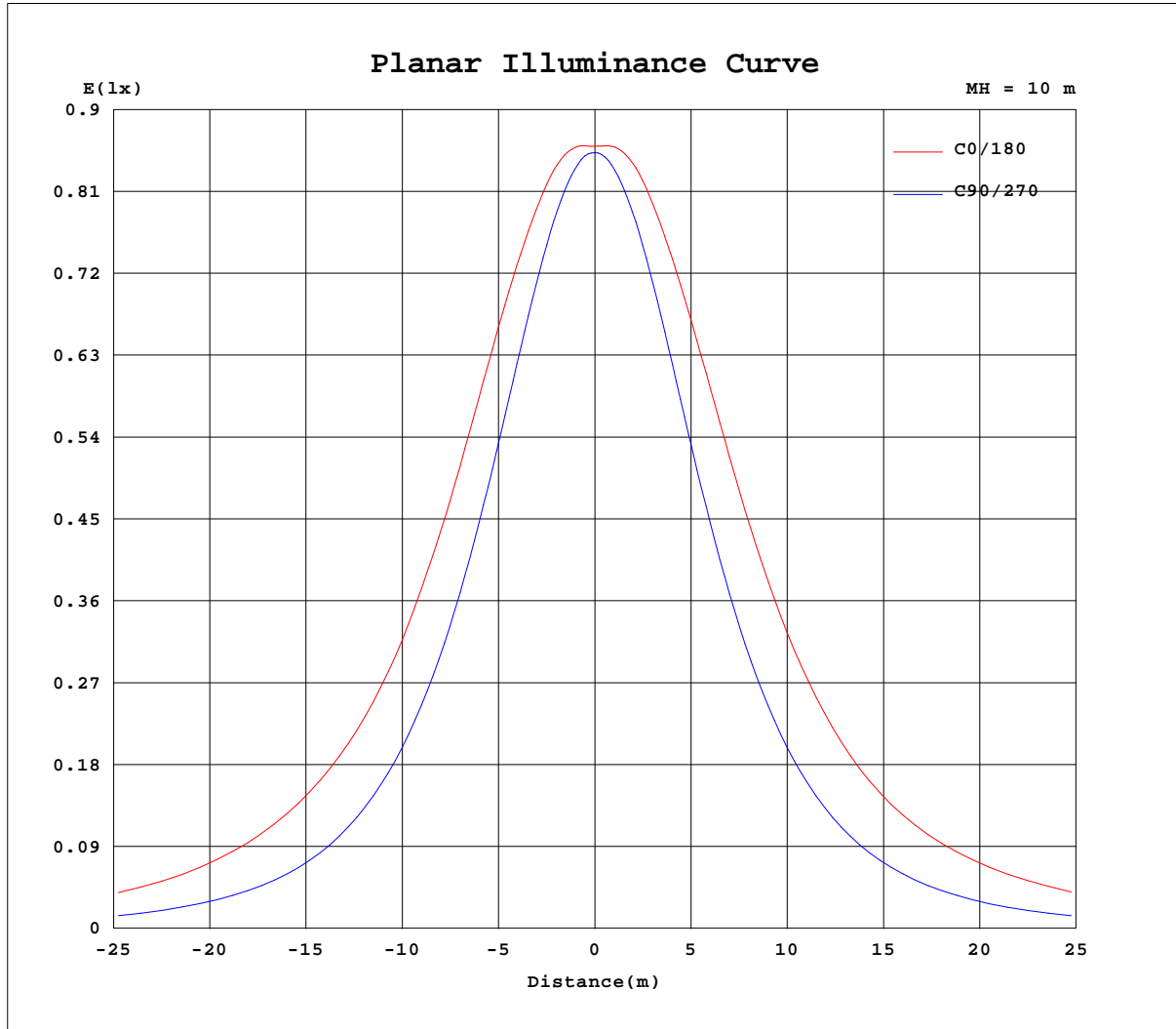
Test:U:24.00V I:0.4167A P:10.000W PF:1.000 Freq:0Hz Lamp Flux:480.036x1 lm		
NAME: NMT1010	TYPE:	WEIGHT:
SPEC.:NMT1010-9LW24NSN000CC0100	DIM.: 1000*10*10mm	SERIAL No.:
MFR.: COLORS	SUR.:1000*10mm	Shielding Angle:



C Range: 0 - 360DEG
 C Interval: 45.0DEG
 Test Speed: HIGH
 Temperature:25.3DEG
 Operators:JYH
 Test Date:2020-10-15

Page Range: 0 - 180DEG
 Interval: 1.0DEG
 Test System:EVERFINE GO-2000A_V1 SYSTEM V2.0.362
 Humidity:65.0%
 Test Distance:10.950m [K=1.0000]
 Remarks:

Planar Illuminance Curve



C Range: 0 - 360DEG
 C Interval: 45.0DEG
 Test Speed: HIGH
 Temperature: 25.3DEG
 Operators: JYH
 Test Date: 2020-10-15

Page Range: 0 - 180DEG
 Interval: 1.0DEG
 Test System: EVERFINE GO-2000A_V1 SYSTEM V2.0.362
 Humidity: 65.0%
 Test Distance: 10.950m [K=1.0000]
 Remarks:

LUMINOUS DISTRIBUTION INTENSITY DATA

Test:U:24.00V I:0.4167A P:10.000W PF:1.000 Freq:0Hz Lamp Flux:480.036x1 lm		
NAME: NMT1010	TYPE:	WEIGHT:
SPEC.:NMT1010-9LW24NSN000CC0100	DIM.: 1000*10*10mm	SERIAL No.:
MFR.: COLORS	SUR.:1000*10mm	Shielding Angle:

Table--1

UNIT: cd

C(DEG) g (DEG)	0	45	90	135	180	225	270	315												
0	86.0	85.7	85.3	85.3	86.0	85.7	85.3	85.3												
5	87.0	86.0	85.0	85.7	87.0	86.1	84.9	85.5												
10	88.5	86.5	83.8	86.2	88.7	86.7	83.7	85.9												
15	89.8	86.6	81.8	86.4	90.3	86.9	81.7	86.0												
20	91.0	86.2	79.1	86.1	91.7	86.7	79.0	85.5												
25	92.2	85.3	75.8	85.2	93.1	85.9	75.6	84.5												
30	92.7	84.1	71.8	84.2	94.1	84.9	71.6	83.2												
35	92.4	82.6	67.1	82.7	94.3	83.5	66.9	81.6												
40	91.6	80.4	62.0	80.7	93.6	81.4	61.8	79.3												
45	89.8	77.4	56.4	78.0	91.9	78.7	56.2	76.2												
50	87.9	73.8	50.5	74.5	89.4	75.3	50.4	72.6												
55	86.3	69.9	44.2	70.4	85.9	71.1	44.2	68.5												
60	83.5	65.8	37.7	65.6	82.5	66.3	37.9	64.5												
65	79.1	61.6	31.4	60.3	79.3	61.0	31.2	60.1												
70	72.6	56.0	24.3	55.4	75.0	56.1	24.0	54.5												
75	65.2	49.3	16.5	49.6	68.3	50.3	16.9	47.9												
80	58.1	42.6	9.52	43.5	61.2	44.2	10.3	41.3												
85	52.4	35.9	3.82	37.3	55.2	37.8	4.65	35.0												
90	48.6	31.4	0.75	33.2	51.0	33.8	1.36	31.4												
95	48.0	29.7	0.64	31.4	49.6	32.1	0.99	28.7												
100	47.0	29.8	0.37	30.7	48.7	31.4	0.25	26.6												
105	45.4	29.5	0.37	30.0	47.0	30.6	0.34	26.4												
110	43.2	27.2	0.41	28.5	44.9	29.0	0.43	24.5												
115	40.4	23.8	0.53	24.2	42.0	24.9	0.52	21.0												
120	37.3	15.6	0.61	22.1	38.7	22.8	0.59	13.8												
125	32.9	5.32	0.71	13.0	35.1	13.2	0.66	4.33												
130	20.4	1.46	0.76	3.07	29.9	2.73	0.73	1.16												
135	6.62	1.36	0.82	1.37	16.2	1.11	0.78	1.16												
140	2.01	1.26	0.87	1.36	3.47	1.10	0.85	1.14												
145	1.76	1.15	0.95	1.26	1.35	1.16	0.90	1.11												
150	1.59	1.15	0.97	1.26	1.30	1.17	0.96	1.10												
155	1.46	1.15	1.04	1.30	1.29	1.25	1.06	1.10												
160	1.41	1.16	1.14	1.32	1.27	1.26	1.16	1.10												
165	1.41	1.21	1.25	1.35	1.25	1.28	1.26	1.14												
170	1.35	1.30	1.34	1.40	1.18	1.36	1.36	1.25												
175	1.23	1.41	1.40	1.45	1.17	1.38	1.46	1.36												
180	1.22	1.48	1.48	1.48	1.20	1.48	1.50	1.47												

C Range: 0 - 360DEG
 C Interval: 45.0DEG
 Test Speed: HIGH
 Temperature:25.3DEG
 Operators:JYH
 Test Date:2020-10-15

g Range: 0 - 180DEG
 Interval: 1.0DEG
 Test System:EVERFINE GO-2000A_V1 SYSTEM V2.0.362
 Humidity:65.0%
 Test Distance:10.950m [K=1.0000]
 Remarks: